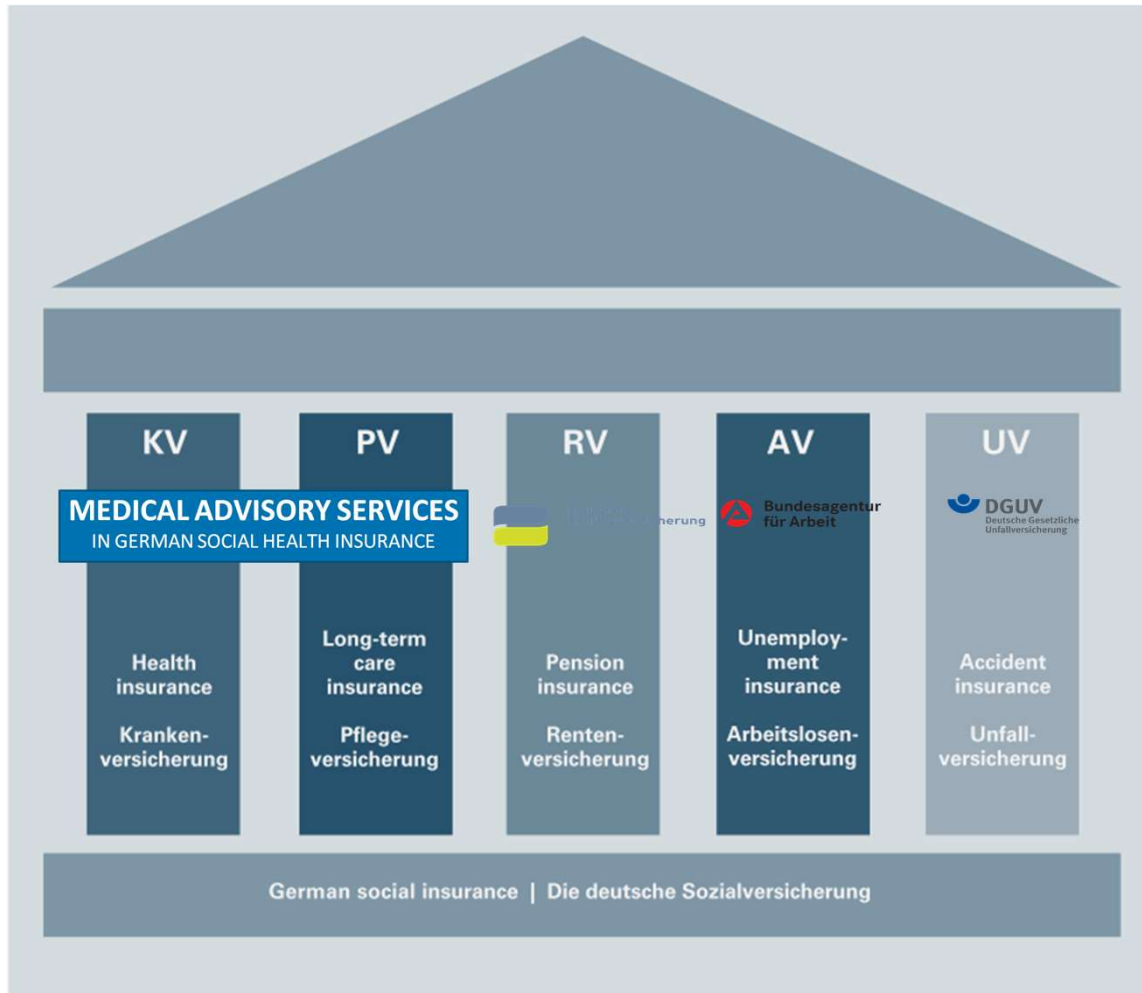


The German Health Care System and the Role of the Medical Advisory Service

A short overview

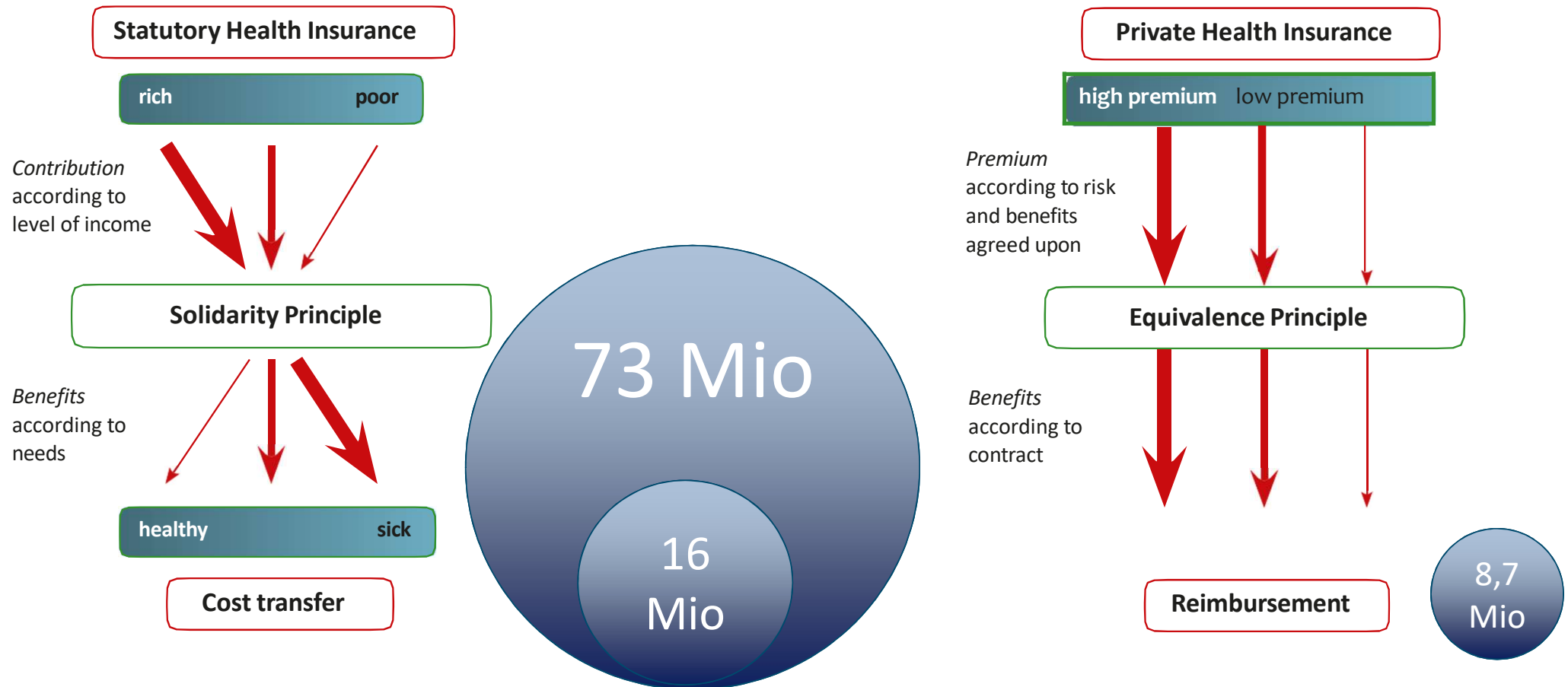
Dr. Kerstin Haid, Leitende Ärztin (CMO)
Düsseldorf, 02.Juni 2023

Social Security System and Health Insurance

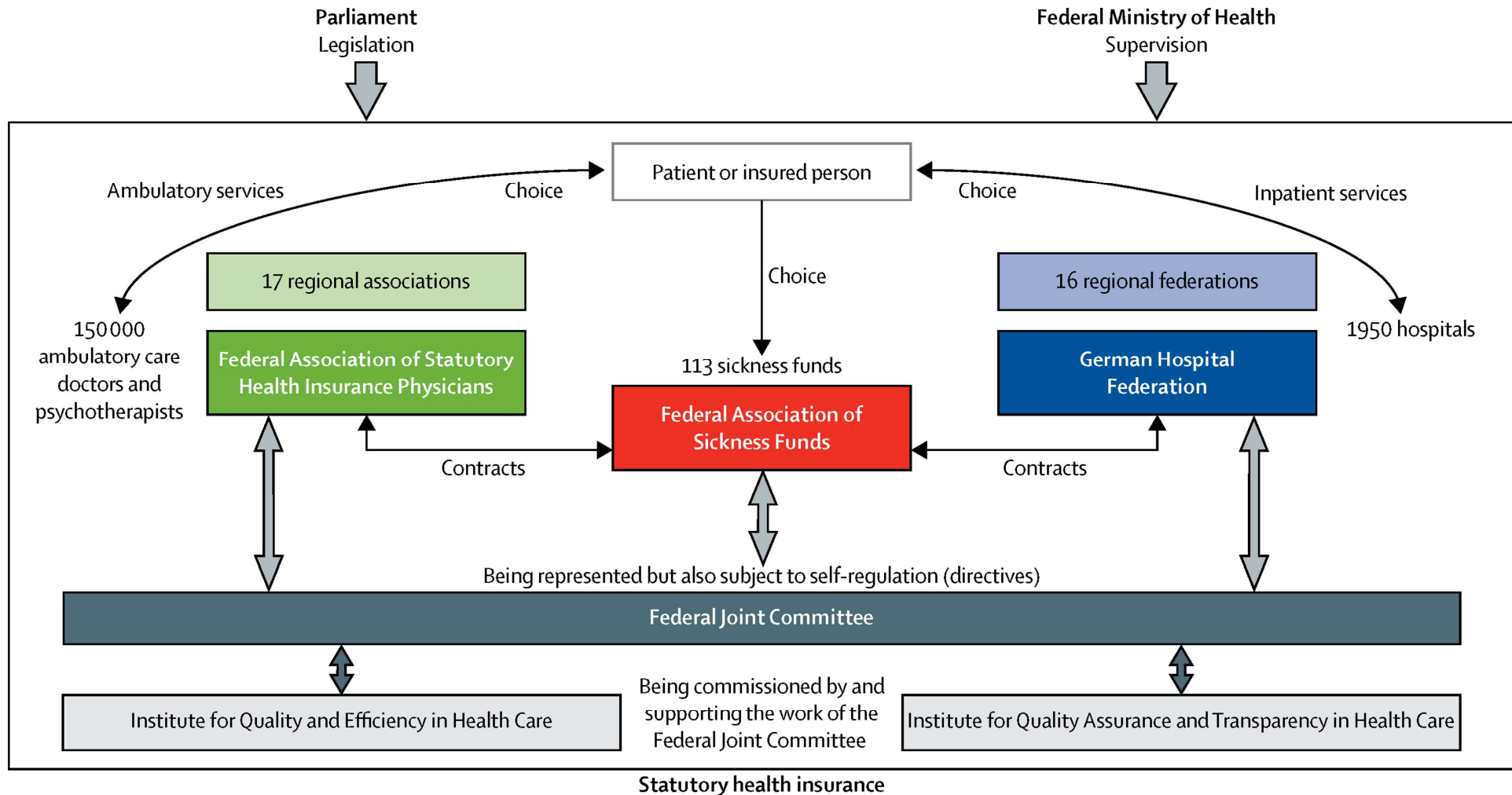


Obligatory membership
for employees under
certain wage levels

Social vs. Private Health Insurance



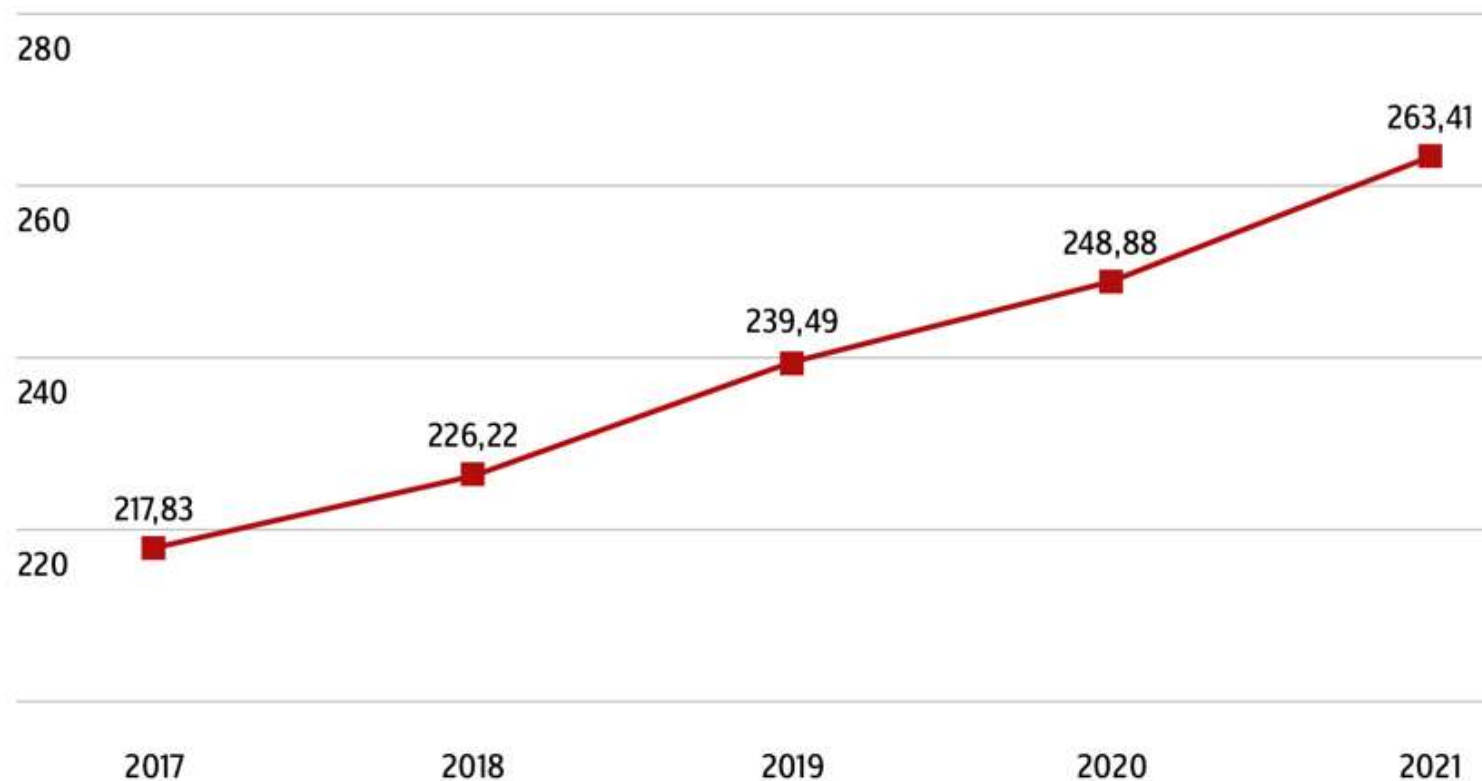
Central actors in Germany's statutory health insurance system



Expenditure of the Statutory Health Insurance

2017-2021

(In billion euros)

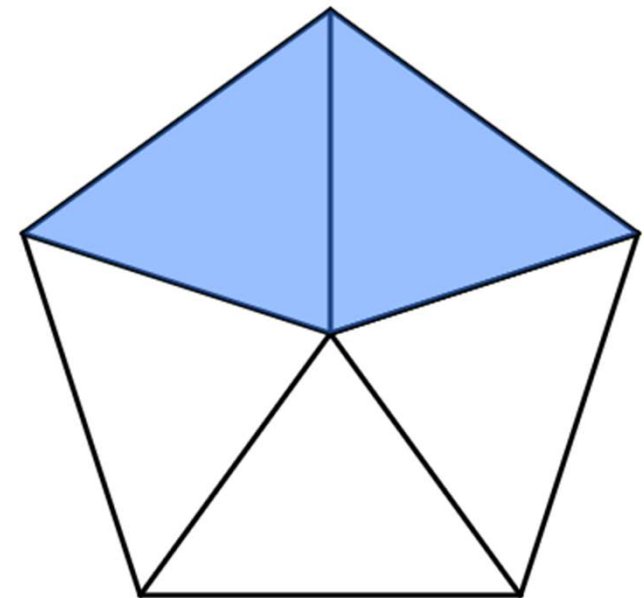


291,6 billion
euros in 2022

(source: GKV-SV)

Fundamental Principles of Statutory Health Insurance

- Solidarity
 - Citizens with lower risks and more resources cross-subsidize the poor and sick
- Benefits in kind
 - Services delivered with- out a bill to the patient
- Parity financing
 - Employers
 - Employees
 - Federal government
- Pluralism
 - Several insurance providers
- Autonomy
 - self-sufficient and self-governing



Medical Advisory Services

Fundamental Principles

- Only clients => health and long-term care insurance companies (few exceptions)
- Medical and nursing consulting services only
- Legally binding decision to provide or pay for health services by health insurance companies only
- Independence of all our recommendations guaranteed by
 - Law (social code book: §§ 275 Abs. 5; 280 Abs. 4 SGB V)
 - Medical/Nurses Association's professional code of conduct
 - Financing and structure(Medical Services are paid for through capitation payments based on the number of insured persons, regardless of actual utilization or the health insurers' satisfaction with the results of the assessment)

Medical Advisory Service – Medizinischer Dienst

Federal subdivisions



- **MD Bund** in Essen and Berlin
- **15 MD** in Germany for 16 federal states
 - **MD Berlin-Brandenburg** for both states
 - **MD Nord**
(for Schleswig-Holstein and Hamburg)
 - **North Rhine Westfalia**
(MD Nordrhein and MD Westfalen-Lippe)

Medical Advisory Service Staff 2021

The Medical Advisory Services
employ
11.146 people,

equivalent to
9.886 full-time positions.

costs: **1,007 billion Euros**



2.468 Medical doctors and experts in social medicine

2.123



4.263 nurses as trained experts for long-term care assessments

3.824



113 other health professionals (pharmacists, psychologists...)

105



515 coding specialists

467



2.810 assistant staff

2.473



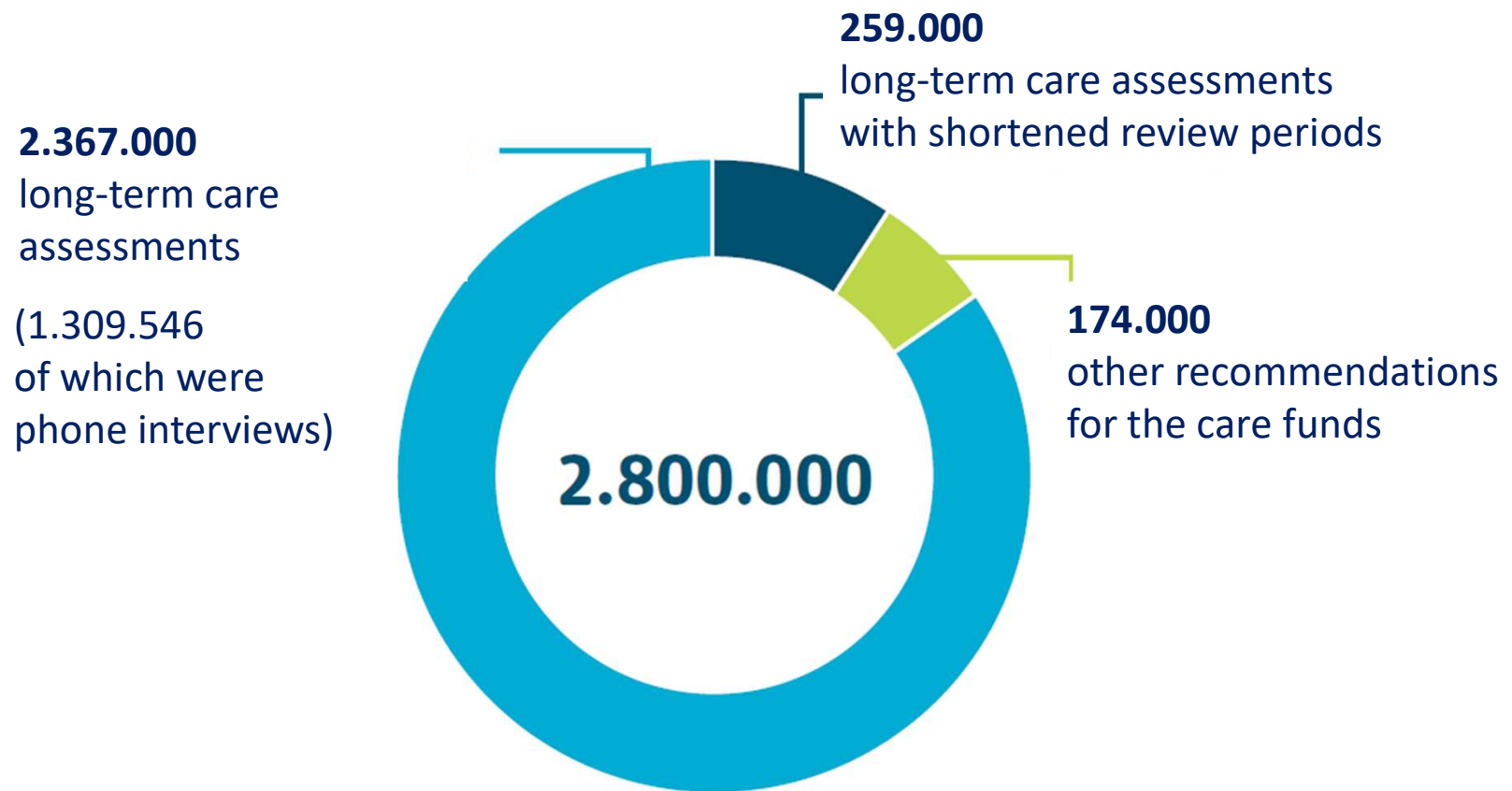
977 administrative staff

894



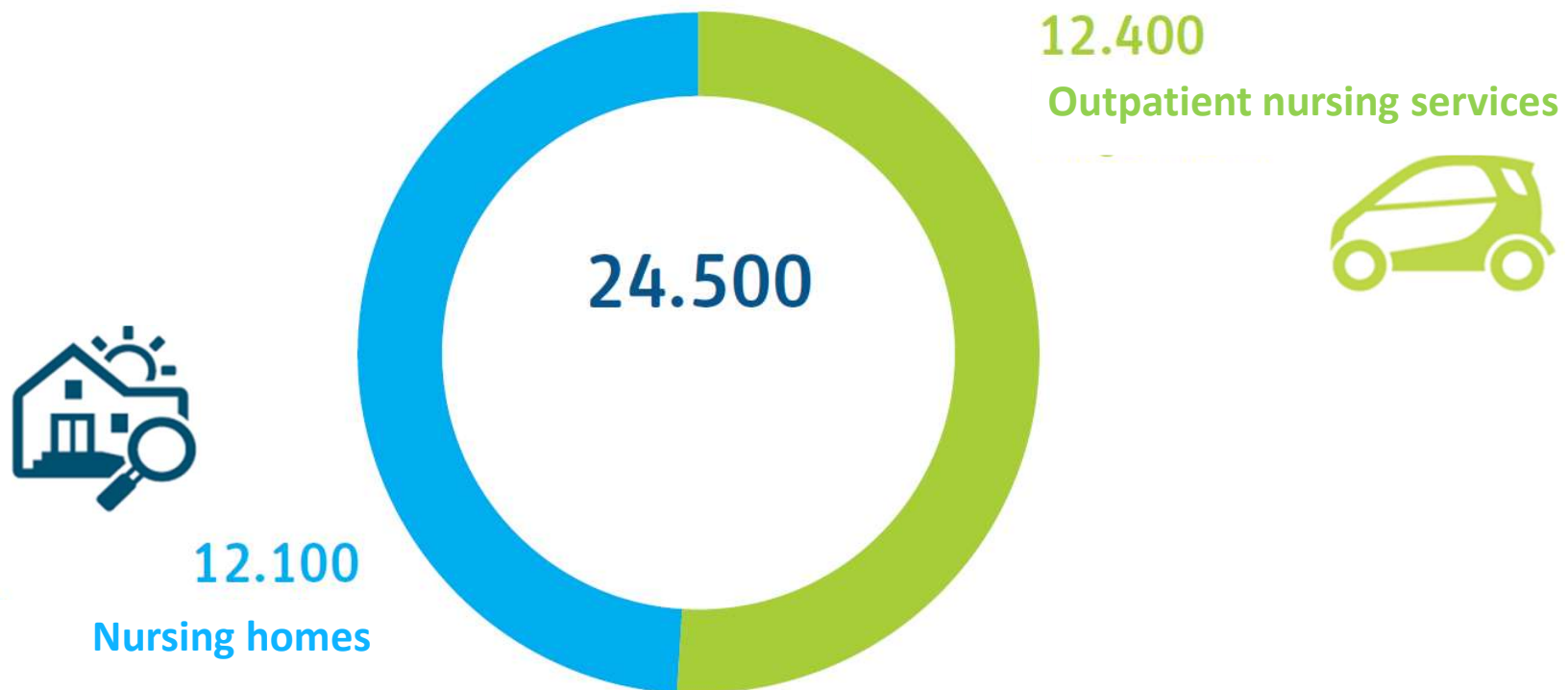
Medical Advisory Services

State level – long-term care 2021



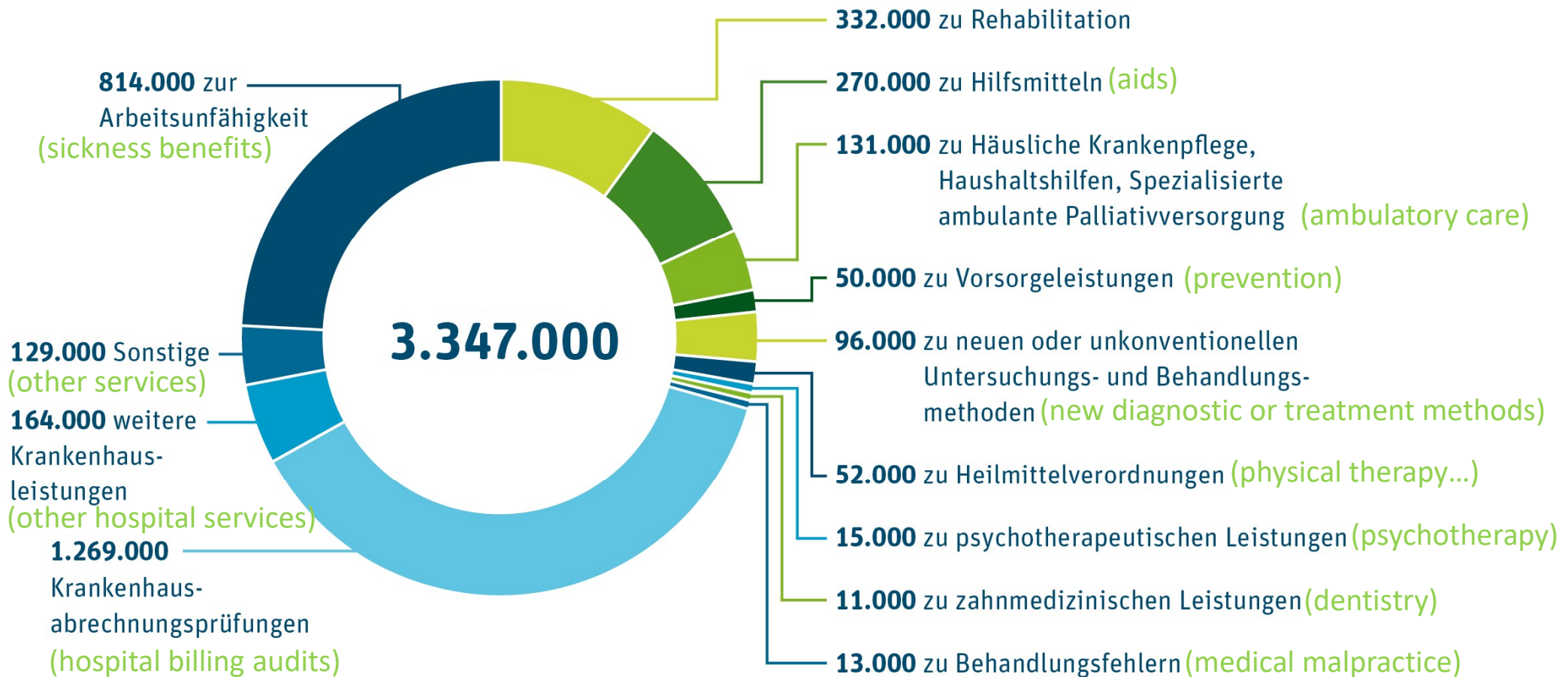
Medical Advisory Services

State level – care quality audits 2019

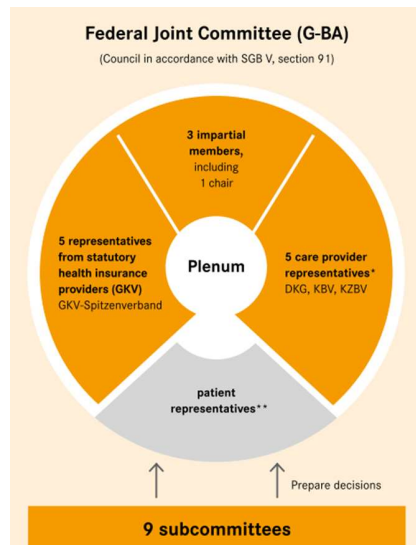


Medical Advisory Services

State level – medicine 2021



Federal Medical Advisory Service



→ Gives medical advice at the federal level

- National Association of the Statutory Health Insurance and Long-Term Care Insurance Funds

→ Provides system consultancy

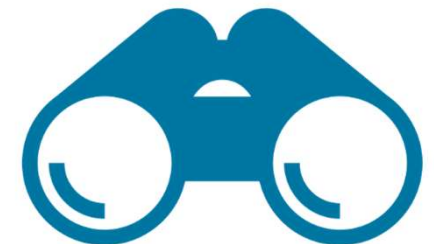
- long term care insurance
- quality of long term care services
- evidence based medicine / HTA
- quality improvement
- medical error and patient safety
- medical devices / medical aids
- ambulatory care / rehabilitation
- others

MEDICAL ADVISORY SERVICES

Future Prospects

2018

- **ongoing increase of tasks and services**
 - e. g. quality and reimbursement of hospital services
- **reinforcement of independence from social health insurance funds**
 - current political objective in some political parties
- **need of continuous advances in social acceptance**
 - turning away from paternalistic attitudes in favor of more patient orientation, participation and transparency
- **looking beyond borders**
 - patient safety issues
 - medical rehabilitation for people in need of care
 - perhaps joining EUMASS... ?



→ Coordination

- Uniform assessment procedures
- Assessment guidelines
- Knowledge management
- Interest representation
- Public relations
- Reporting / statistics
- Others



Do you have any questions?